

Reynobond® | Reynolux®



Colorweld® 500 Architectural Finishes

The colors of Reynobond®
and Reynolux®, with the industry's
first 30-year finish warranty



Reynobond® & Reynolux® standard architectural finishes

Reynobond Aluminum Composite Material and Reynolux metal wall panels and flat sheet are protected and colored with enhanced, high-performance Colorweld® 500 coatings – allowing for color matching between products. These finishes feature 70% Kynar 500®/Hylar 5000® polyvinylidene fluoride (PVDF) resins with Fluoropolymer technology, coil coated to ensure the highest color uniformity and quality. They provide excellent flexibility and film adhesion for forming and offer superior resistance to humidity, impact, salt spray, pollution and abrasion. With a 30-year finish warranty, Colorweld 500 coatings exhibit outstanding color and gloss retention and improved hardness and durability, and they are considered the premier architectural coatings for metal.

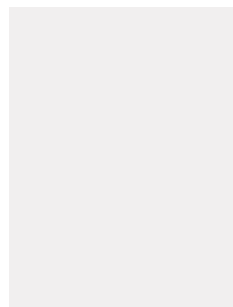
Colorweld® 500

SERIES ONE **Standard Finishes**

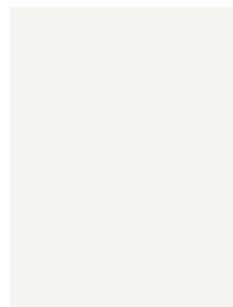
All Reynobond colors are stocked in 62"-wide coil. Ask about 50"-wide coil availability.

Call for availability of matching Reynolux colors in 0.040" x 48" widths. Other gauges and widths available upon request with minimum quantities and charges.

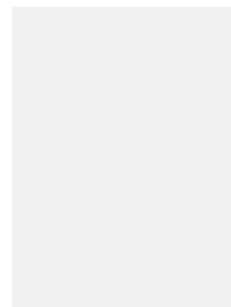
For other Reynolux industry standard "non-stocking" colors, check for availability.



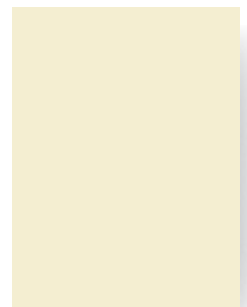
*Pure White**



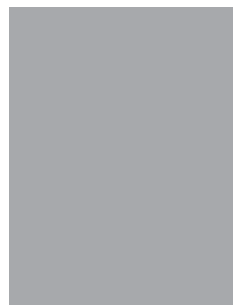
*Bone White**



*Frisco White**



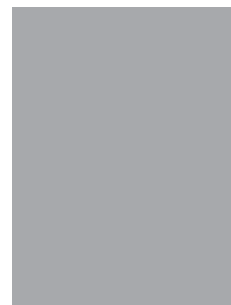
*Oyster White**



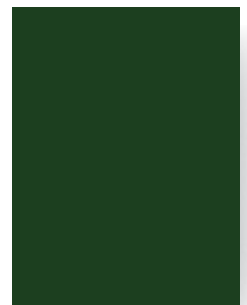
*Castle Grey**



*Pueblo Tan**



*Cadet Grey**



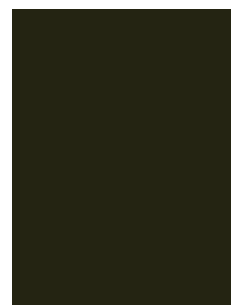
*Classic Green**



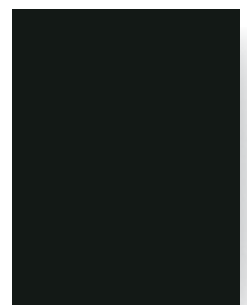
*Konig Blue**



*Brite Red**



Classic Bronze



Deep Black

Colorweld® 500

SERIES TWO Premium Mica Finishes

Series Two anodic colors are formulated to closely resemble popular anodized colors used on curtain wall profiles. Certain colors are gauge and width specific.

When estimating, fabricating and erecting, the appearance of a mica paint finish may vary according to the direction from which it is viewed. For color consistency, it is best to order all material required at one time and in the same width.



Pewter



Platinum*



Silversmith*



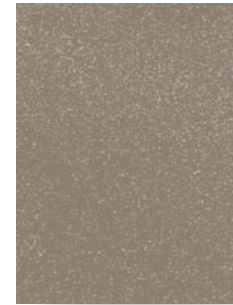
Vancouver Copper*



Anodic Clear*



Anodic Satin*



Anodic Bronze*

Colorweld® 500XL

SERIES THREE Premium Metallic Finishes

When estimating, fabricating and erecting, the appearance of a metallic paint finish may vary according to the direction from which it is viewed. For color consistency, it is best to order all material required at one time and in the same width.



Bright Silver Metallic*



Champagne Metallic*



Copper Penny*



Titanium*

Opaque Finishes: These 2-coat finishes typically consist of a 0.2 mil primer and a 0.8 mil color coat, for a nominal dry film thickness of 1.0 mil.

Mica Finishes: These 2-coat finishes typically consist of a 0.2 mil primer and a 0.8 mil color coat with mica flakes suspended in the finish, for a nominal dry film thickness of 1.0 mil.

Metallic Finishes: These 3-coat finishes typically consist of a 0.2 mil primer, a 0.8 mil color coat and a 0.5 mil clear top coat, for a nominal dry film thickness of 1.5 mils.

Colors and patterns shown are as close to actual colors as possible within the limitations of commercial printing reproduction. Please consult your Alcoa Architectural Products Representative for product samples.

* Environment-friendly cool-pigment finish.

Paint Finish Performance

| Property | Test Method | Opaque | Mica | Metallic |
|---|-------------|------------------------------|------------------------------|------------------------------|
| Specular Gloss (60%) | ASTM D523 | 25-35 | 25-35 | 25-35 |
| Pencil Hardness | ASTM D3363 | F-2H | F-2H | F-2H |
| Flexibility (T-bend) | ASTM D4145 | 0-2 T-bend; No pick off | 0-2 T-bend; No pick off | 0-2 T-bend; No pick off |
| Reverse Impact | ASTM D2794 | No cracking or adhesion loss | No cracking or adhesion loss | No cracking or adhesion loss |
| Salt Spray Resistance 5% Salt Fog @ 95° F | ASTM B117 | Passes 4000 hrs | Passes 4000 hrs | Passes 4000 hrs |
| Humidity Resistance 100% RH @ 95° F | ASTM D2247 | Passes 4000 hrs | Passes 4000 hrs | Passes 4000 hrs |
| Color Retention 10 yrs @ 45°, South Florida | ASTM D2244 | Max 5 fade | Max 5 fade | Max 5 fade |
| Chalk Resistance 10 yrs @ 45°, South Florida | ASTM D4214 | Max 8 chalk | Max 8 chalk | Max 8 chalk |

Colorweld® 500 standard, Colorweld® 500 Mica and Colorweld® 500XL Metallic coatings exceed AAMA 2605 performance requirements. All coatings are thoroughly tested and backed by the strength and integrity of Alcoa. Alcoa Architectural Products Colorweld 500 and Colorweld 500XL coatings come with a 30-year finish warranty. Please consult factory for warranty information.

It is extremely important to note that all mica and metallic finishes exhibit coil-coating grain flow and paint directionality. This is a result of the coil-coating process and the inherent optical diffusion and reflection caused by the mica and metallic flakes in the paint. A consistent panel layout, relative to the directional arrows on the protective film of each Reynobond® panel, must be taken into consideration during design, fabrication and installation.

Irradiative Readings

| Colorweld 500 | SRV [†] | SRI ^{††} | LRV ^{†††} | Colorweld 500 (Mica) | SRV [†] | SRI ^{††} | LRV ^{†††} |
|----------------|------------------|-------------------|--------------------|-----------------------------------|------------------|-------------------|--------------------|
| Pure White | 68.1 | 81 | 75 | Pewter | 19.3 | 15 | 21 |
| Bone White | 68.2 | 82 | 75 | Platinum | 51.8 | 58 | 54 |
| Frisco White | 69 | 83 | 75 | Silversmith | 50.2 | 57 | 31.6 |
| Oyster White | 63 | 74 | 67 | Vancouver Copper | 37.1 | 39 | 30 |
| Castle Grey | 48.1 | 54 | 41 | Anodic Clear | 56 | 65 | 54 |
| Pueblo Tan | 51.1 | 58 | 48 | Anodic Satin | 49.6 | 57 | 40 |
| Cadet Grey | 33.3 | 35 | 35 | Anodic Bronze | 35.2 | 38 | 22 |
| Classic Green | 27 | 25 | 9 | Colorweld 500XL (Metallic) | | | |
| Konig Blue | 32.2 | 32 | 9 | Bright Silver Metallic | 70.6 | 80 | 64 |
| Brite Red | 34.8 | 35 | 9 | Champagne Metallic | 52.8 | 53 | 53 |
| Classic Bronze | 9 | 3 | 6 | Copper Penny | 39 | 41 | 27 |
| Deep Black | 4.5 | 0 | 5 | Titanium | 51.1 | 51 | 31.7 |

[†]Solar Reflectivity Value (SRV)

^{††}Solar Reflective Index (SRI)

^{†††}Light Reflectance Value (LRV)

Colorweld is a registered trademark of Alcoa Architectural Products. Kynar 500® is a registered trademark of Arkema Group. Hylar 5000® is a registered trademark of Solvay Solexis. Colors and patterns shown are as close to actual colors as possible within the limitations of commercial printing reproduction. This publication is based on the latest data available at the time of printing. Due to product changes, improvements and other factors, Alcoa reserves the right to change or withdraw information contained herein without prior notice. Contact Alcoa Architectural Products for material samples.



Availability subject to change. For more information, availability and Design Line product offerings, visit website or contact your Alcoa Architectural Products representative.

Alcoa Architectural Products

50 Industrial Boulevard
Eastman, GA 31023-4129
Tel. 800 841 7774
reynobond.com or reynolux.com

